

# TO MEASURE IS TO KNOW as-built floor plans

## WHY?

- Government & municipal requirements dictate the need for accurate floor plans
- Due diligence - verifies building size for you and future tenants & purchasers
- Provides a basis for required fire plans & other documentation
- Simple marketing - provides prospects with knowledge of the size & shape of before seeing the property
- Advanced marketing - 3D renderings allow prospects to 'feel' a space. Ideal for attracting tenants from further afield
- Maintenance - know where your assets are, know how much you need
- Benchmarking: compare costs by area!

## OUR SERVICES

- Using advanced laser measuring, we accurately, digitally produce plans of your facility or property
- We use mobile BIM workstations to enable full 3D modelling on-site
- We comply to standards based on your needs (BOMA industrial, or city needs for license applications)
- 3rd party verification ensures the integrity of provided drawings

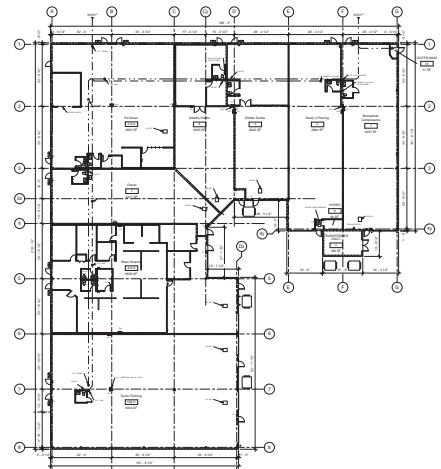


3D model: Galt Fire Hall

**Don't fumble with pencil, paper & measuring tape. Contact Stiplosek Properties (Consulting) Ltd. to book your floor plans! *Specializing in multi-tenant residential & industrial dimensioning.***

## always INCLUDED

- PDF format METRIC drawings with room areas & basic dimensions
- Excel™ room schedule with metric & imperial areas and a room numbering scheme
- Stairs, doors, windows, major plumbing & mechanical elements noted.



## OPTIONS

- Imperial PDF drawings
- Basic & advanced site plans
- Absolute floor heights
- Cabinetwork & millwork
- Furniture inventory
- Photographic survey
- Marketing materials
- Location of safety equipment
- Fire exit plan
- Full 3D rendering
- Many other custom solutions
- Do you have hundreds of keys and don't know what lock it belongs to? Ask about our key inventory package!